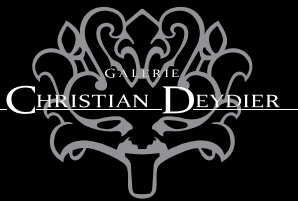


The *ǝ* *jia* / The Honolulu *jia*

Hong Kong / International Antiques Fair / May 28th -31st, 2016







The *ji*
The Honolulu *ji*

China, Shang Dynasty, Yinxu-Anyang period,
14th-13th centuries B.C.

International Antiques Fair / Hong Kong / May 28th - 31st, 2016
Hong Kong Convention and Exhibition center
Booth G4 - 1 expo Drive, Wanchai, Hong Kong

International
Antiques Fair
國際古玩展

Foreword

It is a great privilege for me to be able to present in the International Antiques Fair held in Hong Kong in May 2016, this exceptional Chinese ritual bronze vessel *jia* dating from the beginning of the Yin Xu/Anyang period (circa 14th-13th centuries B.C.), the artistic zenith of the Shang dynasty.

This rare and beautiful vessel, considered one of the five masterpieces of the “Bronze Age” of China still outside of China and in private hands, was formerly in the Collection of the Honolulu Academy of Arts in Hawaii.

This magnificent *jia* is a very old friend of mine, as I had the good fortune to be able to buy it in the late 1980s, and to display it in my second exhibition in 1986. I am extremely happy to have it back today and to have the opportunity to show it in this Hong Kong fair, which is fast becoming the most important antiques and art fair in all of Asia.

I should like to take this opportunity to thank those who have helped me in the different stages in the preparation and production of this catalogue: Vincent Girier Dufournier, who has so skillfully photographed this exceptional object; René Bouchara, who has produced this catalogue; Ed O’Neill for his great help in the translation of the catalogue into English, and finally Clémence Artur, my assistant, who has supervised the whole process from beginning to end and has made it possible for me to present this superb catalogue.

Christian Deydier

Archaic bronze vessel *jia*

China, Shang Dynasty, Anyang period, 14th-13th century B.C.

Archaic bronze wine vessel supported on three massive, splayed legs of triangular cross-section, each with a slight vertical ridge on the outer surface and with slits on the inner surface.

The body is finely cast with three bands of decoration. The lower and central bands are each decorated with three large *taotie* masks in graduated relief, against a ground of *leiwen*, and divided by notched flanges. The upper band has sixteen triangular blades of stylized cicada patterns on a ground of *leiwen*.

The vessel has a very simple loop handle. The beveled rim is set with two tall waisted finials supported on solid rectangular stems, each cast with blades and S-scroll borders, the top with an incised whorl.

The vessel has an extraordinarily pleasing green patina.

A pictogram is engraved in the center of the vessel.

Provenance:

- Li Xihai Collection (1793-1852).
- T.Y. King Collection, Shanghai.
- Honolulu Academy of Arts Collection, Honolulu, Hawaii, USA, n° 3810.
- Wahl-Rostagni Collection, Rome, Italy.

Exhibited:

- Honolulu Academy of Arts, Honolulu, Hawaii.
- Christian Deydier / Oriental Bronzes Ltd., *Ancient Chinese Bronze Vessels, Gilt Bronzes and Early Ceramics*, London, June 1986, catalogue n° 5.
- Galerie Christian Deydier, *Exposition Inaugurale*, Paris, 2008.





Published:

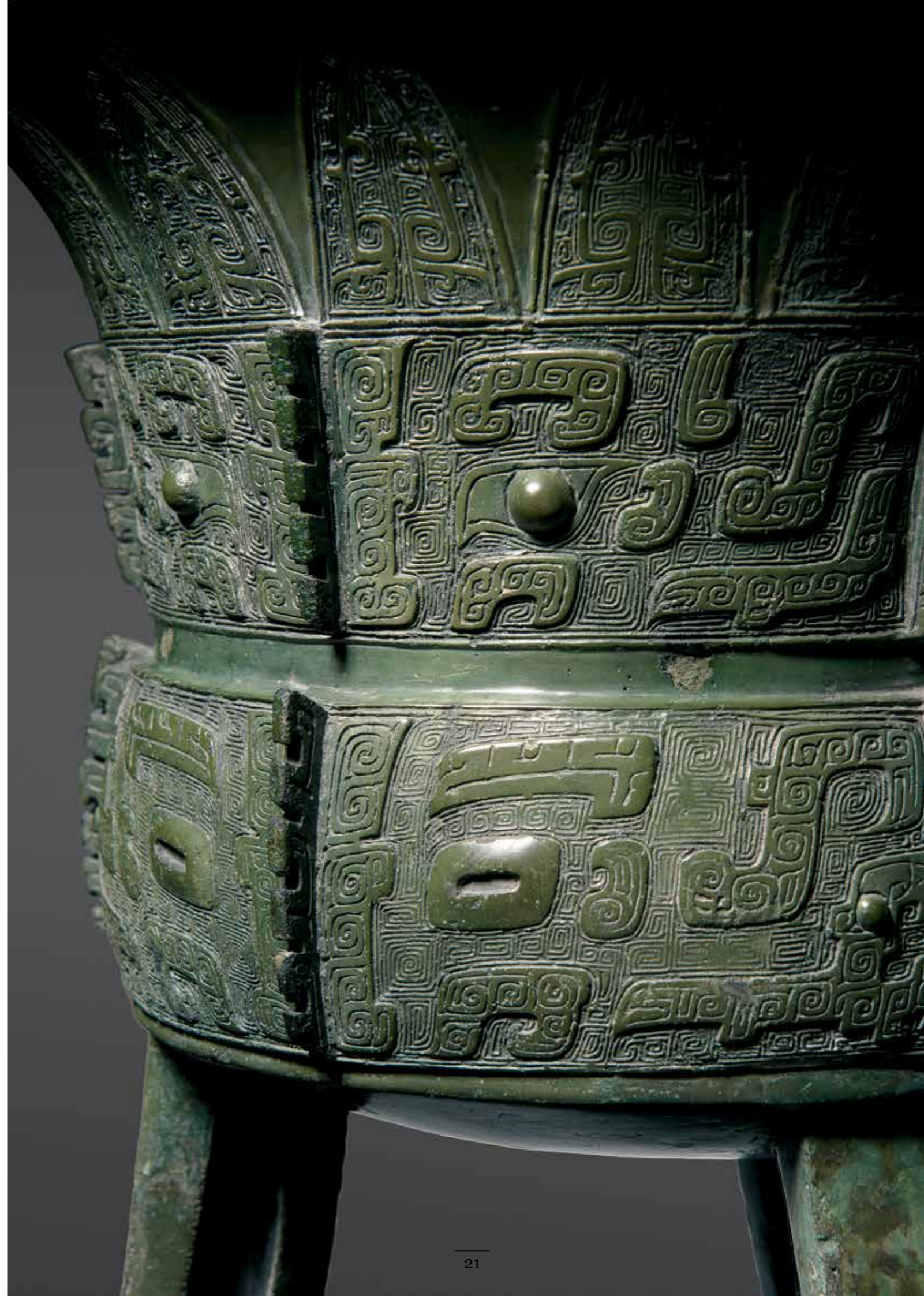
- Liu Xihai, *Chang'an huo gu bian*, 1852, n° 1-30. (Inscription published).
- Fang Junyi, *Zhui Yi Zhai yiqi kaoshi*, 1894, n° 24-22. (Piece and inscription illustrated).
- Luo Zhenyu, *Yin wen cun*, 1917, vol. xia 30. (Inscription published).
- Rong Geng, *Jinwen bian*, 1925, vol. 4-9. (Inscription published).
- Luo Zhenyu, *Sandai jijin wen cun*, 1937, n° 13-47-2. (Inscription published).
- Mizuno S., *Toyo Bijutsu dai gokan, doki (Asiatic Art in Japanese Collections, Chinese Archaic Bronzes)*, Tokyo 1968, vol. 5, plate n° 20. (Piece published).
- Chen Mengjia, *Yin Zhou Qingtongqi Fenlei Tulu (A Corpus of Chinese Bronzes in American Collections)*, Tokyo, 1977, vol. shang, p. 64, n° A305 et p. 206, inscription R175, vol. xia, p. 596, n° A305. (Piece and inscription illustrated).
- Barnard N., and Cheung K.Y., *Rubbings and Hand copies of bronze inscriptions in Chinese, Japanese, European, American and Australasian Collections*, Taipei 1978, vol. 7, n° 1264. (Piece and inscription published).
- Zhou Fagao, *Sandai jijin wen cun bu*, 1980, n° 175.
- Yan Yiping, *Jinwen congqi*, Taipei 1983, vol. 6, p. 2384, n° 4247. (Piece and inscription illustrated).
- Hayashi M., *In Shu jidai seidoki no kenkyu (In Shu seidoki soran ichi), Conspectus of Yin and Zhou Bronzes*, Tokyo, 1984, vol. I, p. 196, plate n° 59. (Piece and inscription recorded).
- Deydier Ch., *Ancient Chinese Bronze Vessels, Gilt Bronzes and Early Ceramics*, London 1986, catalogue n° 5. (Piece illustrated).
- Hai-Wai Yi-Chen (*Chinese Art in overseas Collections*), Bronze II, Taipei 1988, n° 21. (Piece illustrated).
- Deydier, Ch., *Les Bronzes Archaiques Chinois*, vol. I Xia & Shang, Paris, 1995, p.101. (Piece illustrated).
- Li Xueqin et Allan S., *Chinese Bronzes : A selection from European Collections*, Beijing, 1995, plate n° 22. (Piece illustrated).
- Chen Yu, *Yu hua ge jinwen, Jinwen wen xian jicheng ben*, 2005, n° 306-1.
- Deydier Ch., *Exposition Inaugurale*, Paris, 2008, p. 4-7. (Piece illustrated).
- Eskenazi G. & Elias H., *A Dealer's Hand: The Chinese Art World Through the Eyes of Giuseppe Eskenazi*, London, 2012, p. 180, plate n° 13. (Piece illustrated).
- Wu Zhenfeng, *Shang Zhou Qingtongqi, Mingwen Ji Tuxiang Jicheng*, Shanghai 2012, vol. 20, p. 5, n° 10883. (Piece and inscription published).

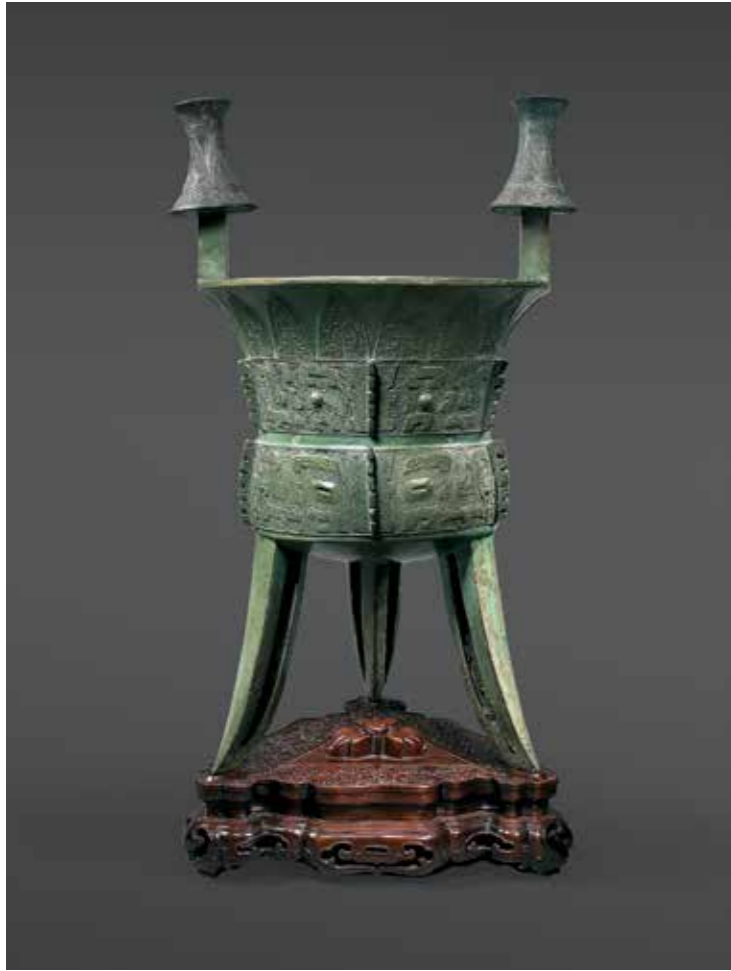












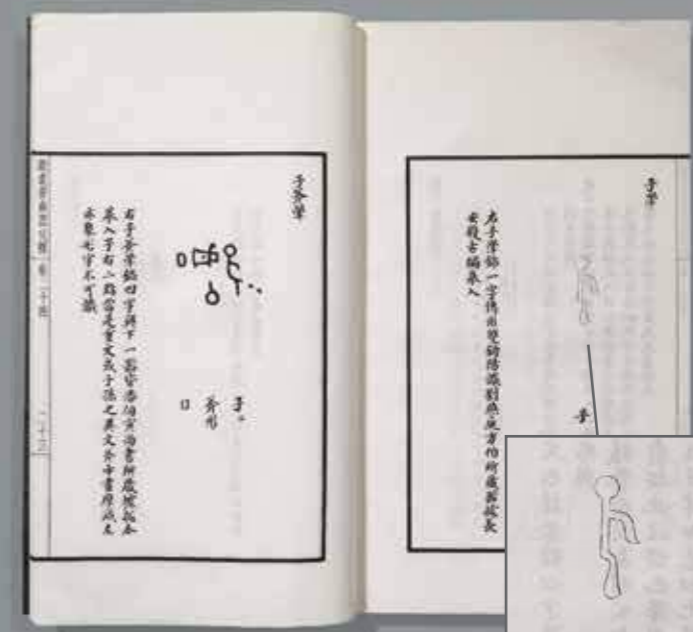


Publications



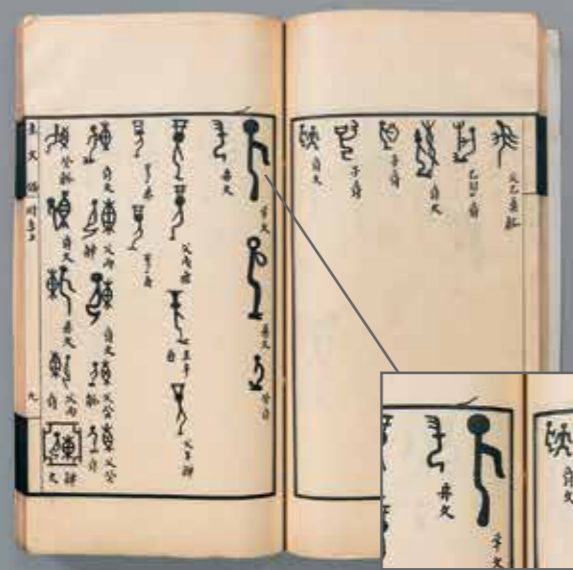
Liu Xihai
Chang'an huò gǔ biān

1852, n° 1-30.
(Inscription published)



Fang Junyi
Zhūi Yí Zhāi yí qì kǎo shì

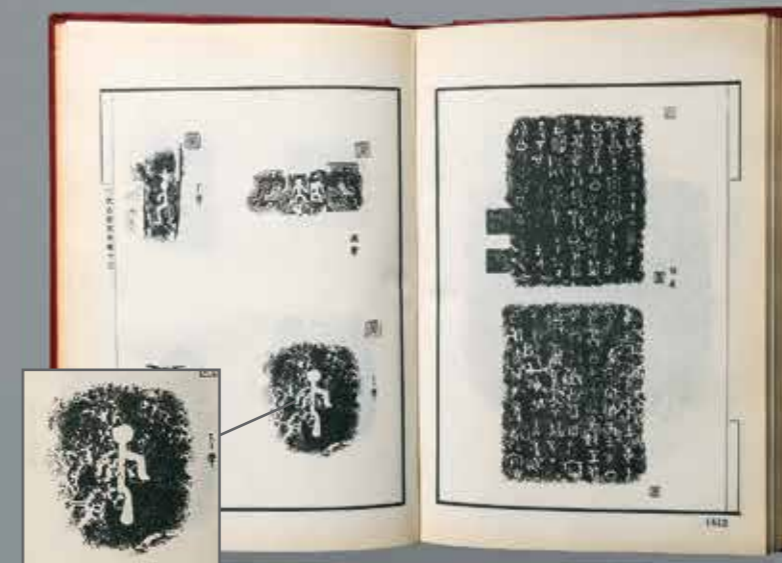
1894, n° 24-22.
(Piece and inscription illustrated)



Rong Geng

Jinwen bian

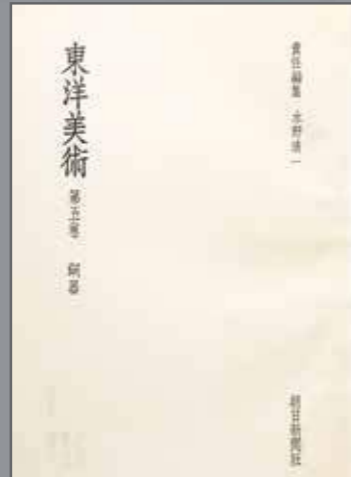
1925, vol. 4-9.
(Inscription published)



Luo Zhenyu

Sandai jijin wen cun

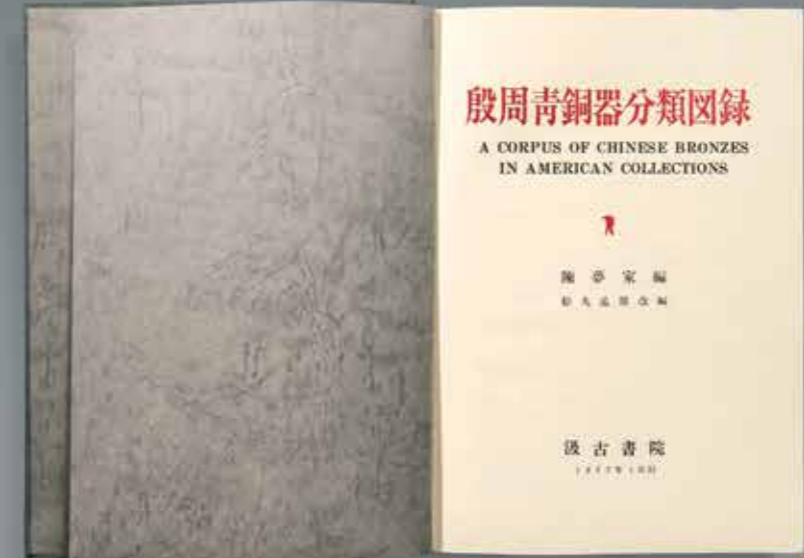
1937, n° 13-47-2.
(Inscription published)



Mizuno S.

Toyō Bijutsu dai gokan, doki
(Asiatic Art in Japanese Collections,
Chinese Archaic Bronzes)

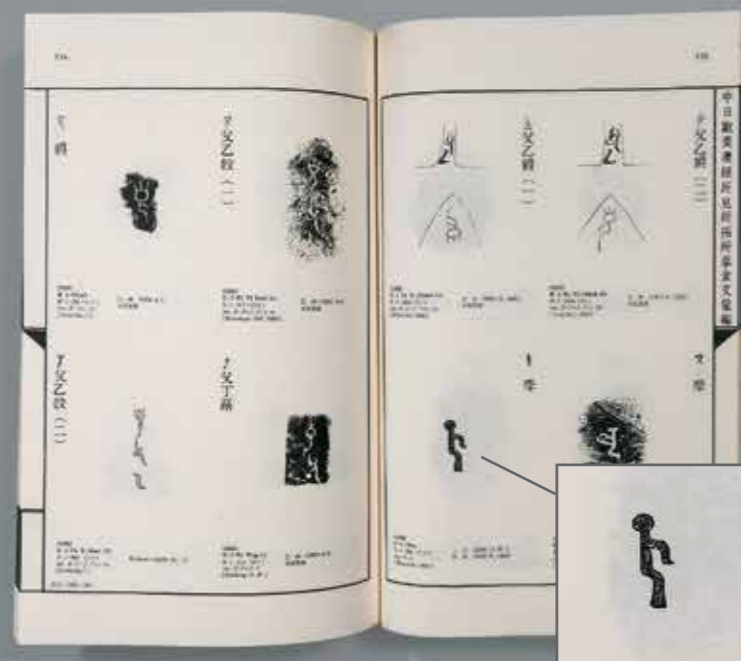
Tokyo 1968, vol. 5, plate n° 20.
 (Piece published)



Chen Mengjia

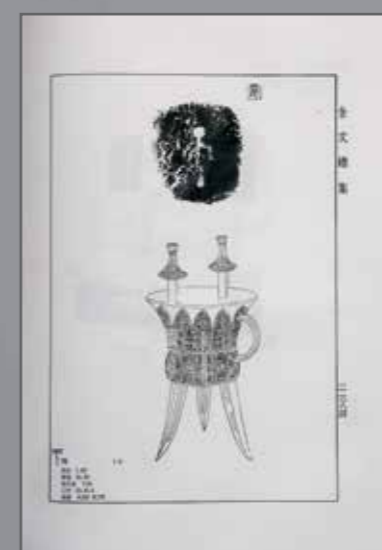
Yin Zhou Qingtongqi Fenlei Tulu
(A Corpus of Chinese Bronzes in
American Collections)

Tokyo, 1977, vol. shang, p. 64, n° A305 et
 p. 206, inscription R175, vol. xia, p. 596,
 n° A305. (Piece and inscription illustrated)



Barnard N., and Cheung K.Y.
*Rubbings and Hand copies of
 bronze inscriptions in Chinese,
 Japanese, European, American and
 Australasian Collections*

Taipei 1978, vol. 7, n° 1264.
 (Piece and inscription published)



Yan Yiping
Jinwen congqi

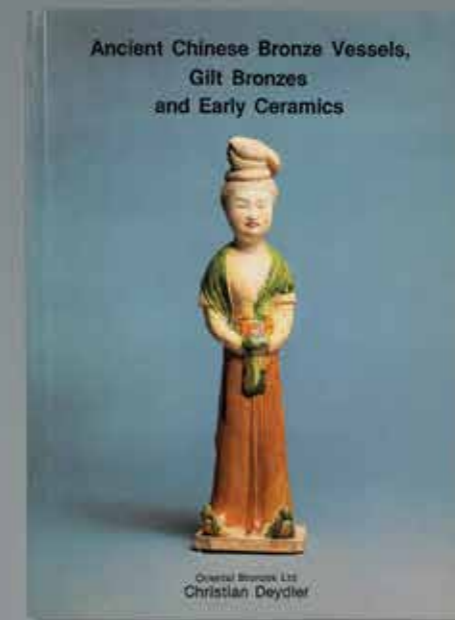
Taipei 1983, vol. 6, p. 2384, n° 4247.
 (Piece and inscription illustrated)



Hayashi M.

In Shu jidai seidoki no kenkyu (In Shu seidoki soran ichi), Conspectus of Yin and Zhou Bronzes

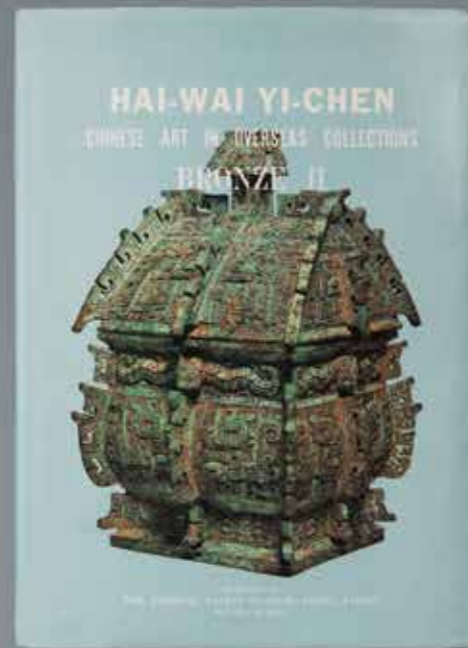
Tokyo, 1984, vol. I, p. 196, plate n° 59.
(Piece and inscription recorded)



Deydier Ch.

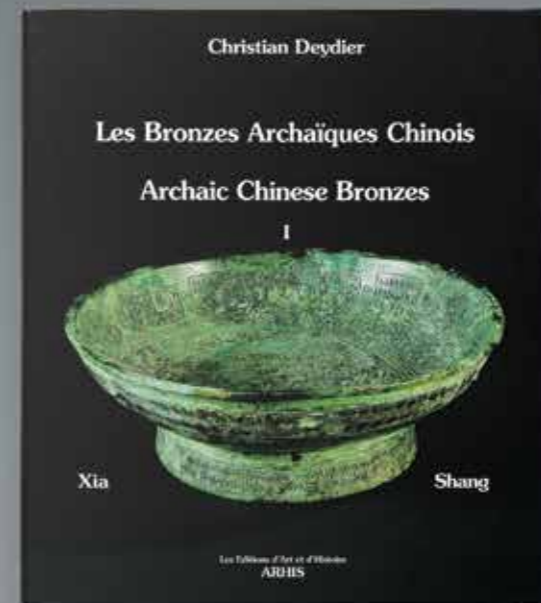
Ancient Chinese Bronze Vessels, Gilt Bronzes and Early Ceramics

London 1986, catalogue n° 5.
(Piece illustrated)



Hai-Wai Yi-Chen (Chinese Art in overseas Collections)

Bronze II, Taipei 1988, n° 21.
(Piece illustrated)



Deydier, Ch.
Les Bronzes Archaïques Chinois

vol. I Xia & Shang, Paris, 1995, p.101.
(Piece illustrated)





Li Xueqin et Allan S.

*Chinese Bronzes : A selection from
European Collections*

Beijing, 1995, plate n° 22.
(Piece illustrated)



Deydier Ch.

Exposition Inaugurale

Paris, 2008, p. 4-7.
(Piece illustrated)





Eskenazi G. & Elias H.
A Dealer's Hand: The Chinese Art World Through the Eyes of Giuseppe Eskenazi

London, 2012, p. 180, plate n° 13.
 (Piece illustrated)



Wu Zhenfeng
Shang Zhou Qingtongqi, Mingwen Ji Tuxiang Jicheng

Shanghai 2012, vol. 20, p. 5, n° 10883.
 (Piece and inscription published)



